

**Walltherm®**  
The Original

*The first water heating  
wood gasification stove*

*New*

*Walltherm®*

*Vajolet*

*with*

**STAINLESS STEEL**  
combustion chamber

**Rely on experience,  
trust the Original**



**WALLNÖFER**

SOLAR SYSTEMS & WOODSTOVES





# Walltherm® Vajolet



*The Walltherm®  
is under patent protection*

*Walltherm® Vajolet  
black*



## **STAINLESS STEEL combustion chamber**

**Efficiency >90%**  
with lowest emissions due to the  
wood gasification system.

**The stove works  
with natural draught  
(without fan and annoying noises)**

**up to 80% of the heat energy  
goes to the water  
(ideal for low energy buildings)**

**Burning time  
up to 5 hours**

**Warranty: 5 years  
on the stoves body**

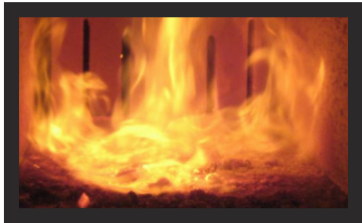
*serial accessories:*

- air cooled handels (optionally also mount on the left)*
- connection combustion air from the bottom or the backside*
- adjustable flame pattern (manual combustion air controller and flue damper system)*
- water connections on the backside*
- double glass for both doors (optionally provided with heat resistand IR- glasses)*



Thanks to the long experiences in developing and performing the proven wood gasification system, the Pioneer Wallnöfer has set a milestone with the new and innovative water heating stove Walltherm® Vajolet.

The silent wood gasification system of the Walltherm® Vajolet guarantees an efficiency of over 90% without any fan and electricity!



Choosing stainless steel for the combustions chambers is one of the newest advantages that shows once more the high quality of this product. Additionally, the new model is nearly jacketed completely with water so that 80% of the produced heat will be used in the central heating system. The remaining 20% ensure a pleasant radiating warmth.

Due to this heat division, the new Walltherm® Vajolet can be installed not only in older building but also in low energy houses.



Walltherm® Vajolet  
white - black - white



Walltherm® Vajolet  
white - silver - white



**Trust the Original**

#### *The insert model:*

As Walltherm® Vajolet Basic is available the insert version which can be built into a wall and designed individually.

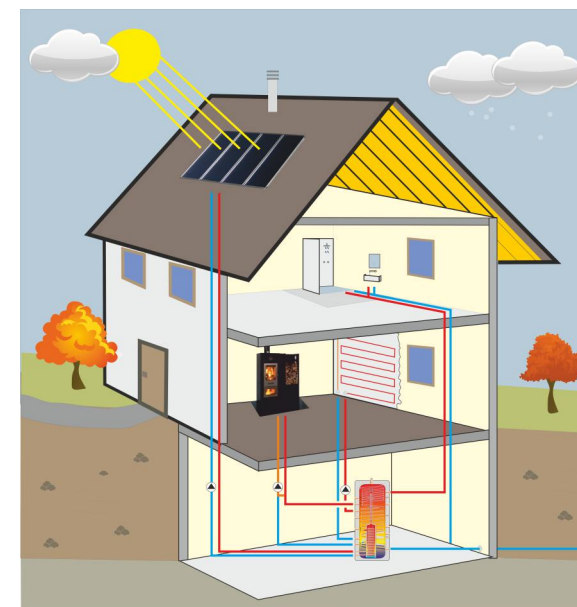
There is also the possibility to use the Firepanel panelling, that can be painted with the preferred colour.

# Walltherm® Vajolet

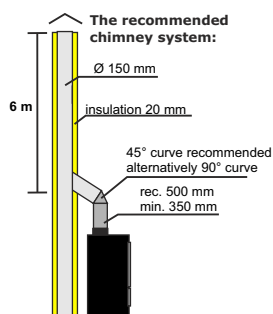
Our advice:

Heat with the sun and wood

<b>Efficiency:</b>	<b>&gt;90%</b>
power output:	10 KW
heat output min/max.:	8 - 15 KW
heat division:	up to 80% water & 20 % radiation (air)
dust:	13,2 mg/Nm <sup>3</sup>
height / width / depth:	1373 mm / 531 mm / 635 mm
combustion chamber:	~55 lt
chimney draught (without fan):	12 Pa (max. 20 Pa)
weight:	ca. 300 kg (without water)
water content:	ca. 80 lt
working pressure:	max. 2,5 bar
combustion air connection bottom/backside:	Ø 125 mm
diameter of the chimney:	Ø 150 mm (internal)
flue mass:	8,8 g/s
exhaust gas temperature:	ca. 120 - 160 °C
exhaust gas temperature lighting phase:	ca. 250 - 400 °C
fuel:	natural dried wood max. length <b>35 cm</b> - max. 20% humidity
norm:	EN13240 / Art. 15a (2015) BVG
minimum distance to burnable material	
lateral / back / front :	10 cm / 10 cm / 100 cm
warranty*:	5 years for the stoves body (wear parts excluded) 2 years on all valves and electrical components



29.05.2017 Pictures: pixabay.com



\*the commissioning needs to be done by an authorised personal and the protocol needs to be sent to the producer (Wallnöfer)

The Walltherm® is under patent protection

Walltherm® The Original  
developed and produced by:



**Wallnöfer GmbH** Energiesysteme  
Gewerbezone Kiefernainweg 110  
39026 Prad am Stj.  
Südtirol / Italy

Tel. 0039 0473 61 63 61  
info@wallnoefer.it  
**wallnoefer.it**  
**walltherm.com**

A company from  
**SÜDTIROL**